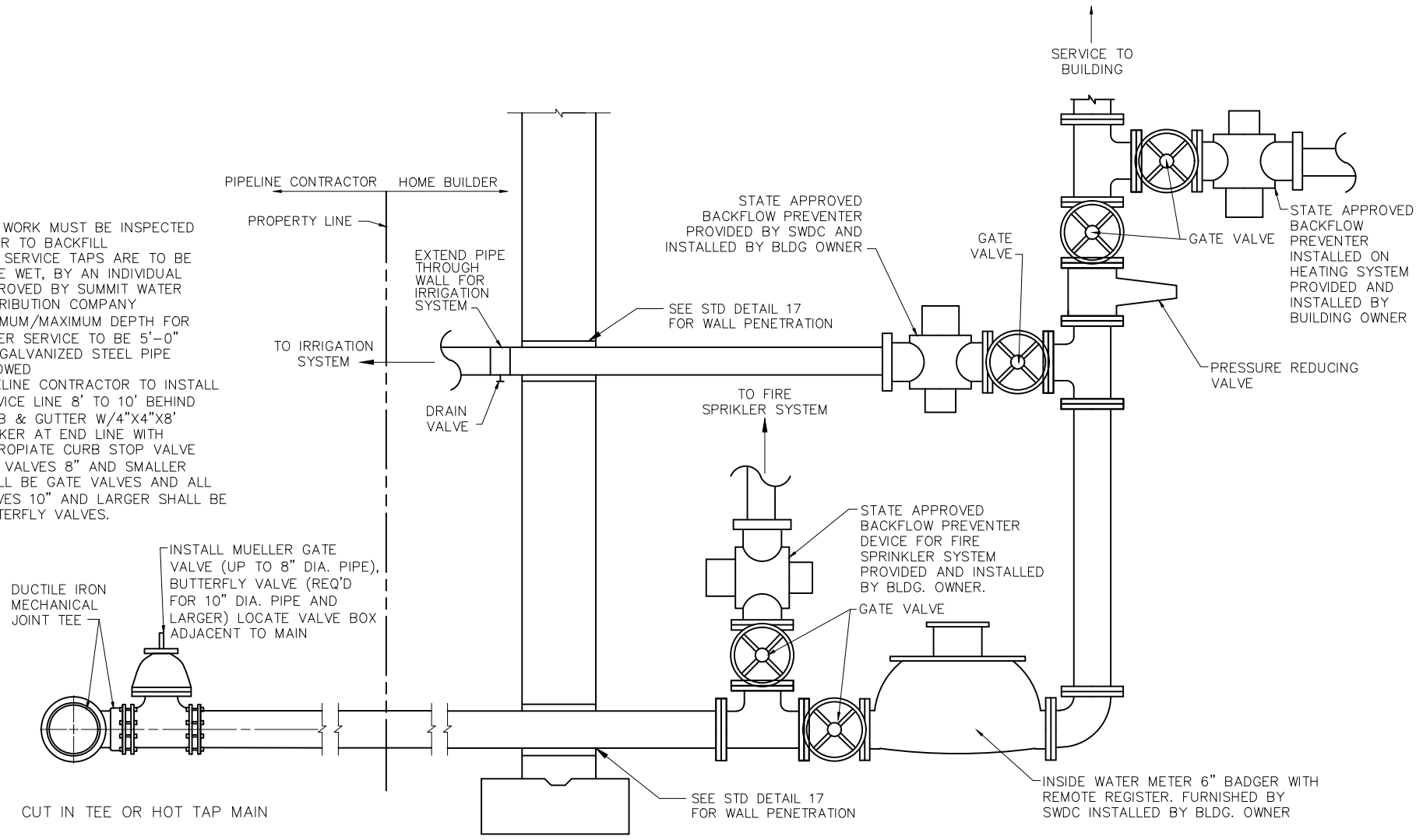


NOTES:

1. ALL WORK MUST BE INSPECTED PRIOR TO BACKFILL
2. ALL SERVICE TAPS ARE TO BE DONE WET, BY AN INDIVIDUAL APPROVED BY SUMMIT WATER DISTRIBUTION COMPANY
3. MINIMUM/MAXIMUM DEPTH FOR WATER SERVICE TO BE 5'-0"
4. NO GALVANIZED STEEL PIPE ALLOWED
5. PIPELINE CONTRACTOR TO INSTALL SERVICE LINE 8' TO 10' BEHIND CURB & GUTTER W/4"x4"x8" MARKER AT END LINE WITH APPROPRIATE CURB STOP VALVE
6. ALL VALVES 8" AND SMALLER SHALL BE GATE VALVES AND ALL VALVES 10" AND LARGER SHALL BE BUTTERFLY VALVES.



4			
3			
2			
1	12/31/15	TSC	UPDATE PER SWDC
REV.	DATE	BY	DESCRIPTION

**Bowen Collins & Associates, Inc.**  
CONSULTING ENGINEERS

**SUMMIT WATER DISTRIBUTION CO.**

**6" AND LARGER SERVICE CONNECTION**

STD. DWG. NO.  
**12**