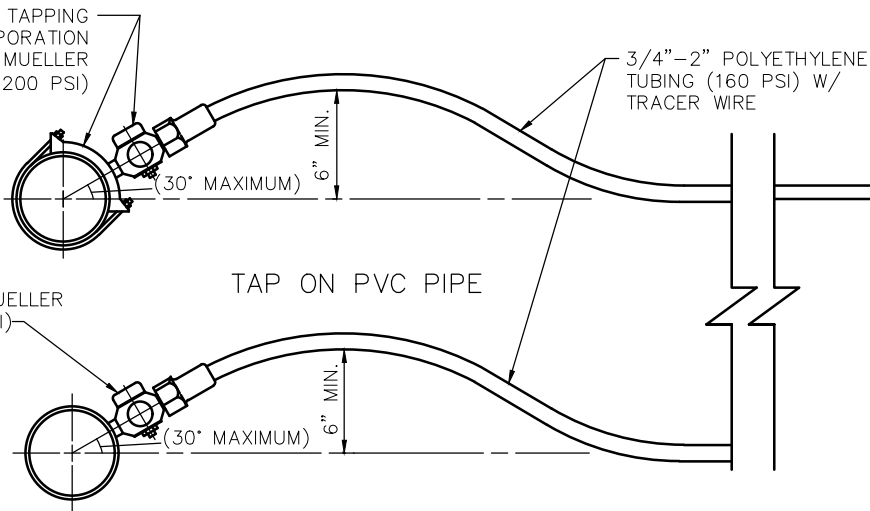


NOTES:

1. ALL WORK MUST BE INSPECTED PRIOR TO BACKFILL
2. MINIMUM DISTANCE BETWEEN TAPS-30" WITH A MINIMUM 5' STAGGER
3. NO TAPS WITHIN 30" FROM THE END OF PIPE
4. ALL SERVICE TAPS ARE TO BE DONE WITH A TAPPING MACHINE APPROVED BY SUMMIT WATER DISTRIBUTION COMPANY
5. TEFLON TAPE REQUIRED ON ALL TAPS
6. MINIMUM DEPTH FOR WATER SERVICE TO BE MINIMUM 4'-6", MAXIMUM 5'-0"
7. NO GALVANIZED STEEL PIPE ALLOWED
8. PIPELINE CONTRACTOR TO INSTALL SERVICE LINE 8' TO 10' BEHIND CURB & GUTTER.
9. FOR HDPE, SERVICE CONNECTIONS SHALL USE ELECTROFUSION CORP SADDLES
10. SAND BEDDING MATERIAL SHALL BE 6" BELOW AND 18" ABOVE THE PIPE
11. WATER LOCATION TAPE SHALL BE INSTALLED 3'-0" ABOVE THE PIPE
12. CORP STOP AND CURB STOP VALVES SHALL BE LOCATED BY GPS OR SURVEY GRADE EQUIPMENT. DATA COLLECTION TO BE COORDINATED WITH SWDC INSPECTOR.

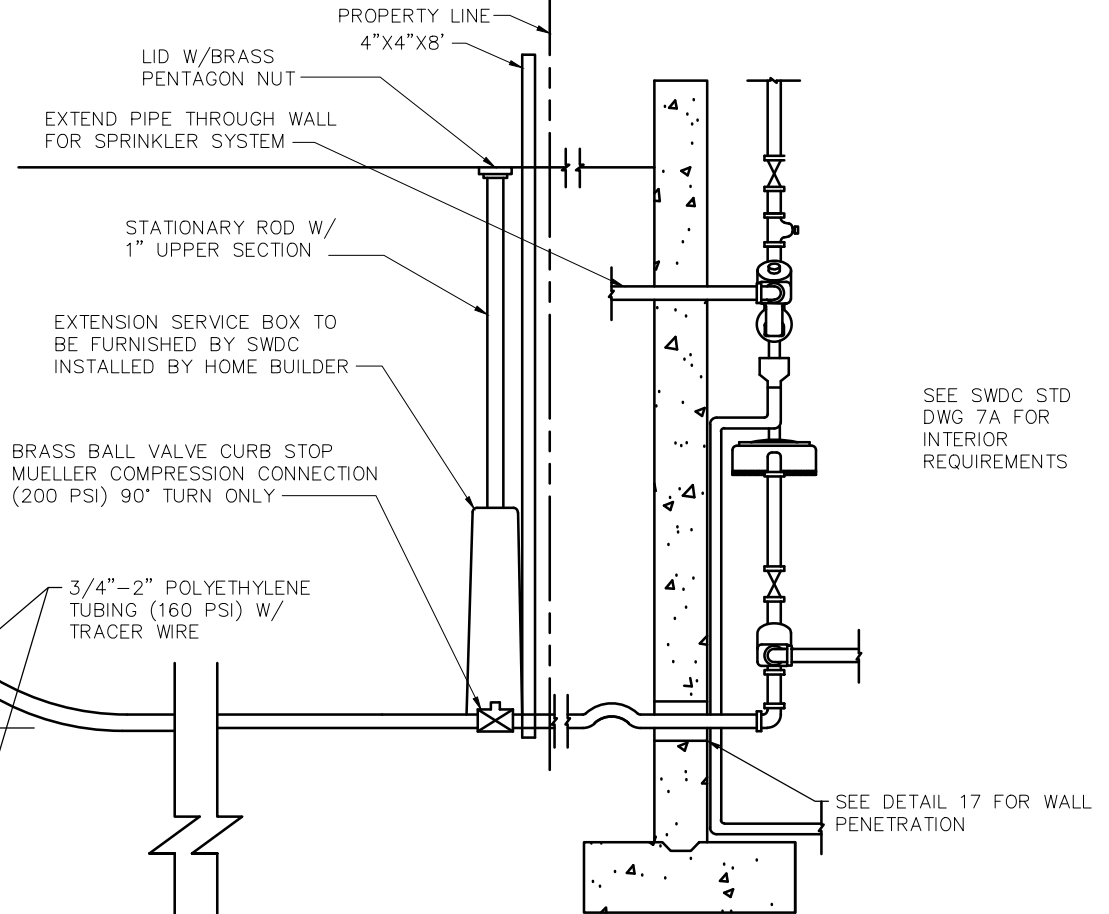
DOUBLE STRAP BRASS TAPPING SADDLE AND CORPORATION STOP FOR MUELLER COMPRESSION (200 PSI)

CORPORATION STOP MUELLER COMPRESSION (200 PSI)



TAP ON DUCTILE IRON PIPE

PIPELINE CONTRACTOR HOME BUILDER



SEE SWDC STD DWG 7A FOR INTERIOR REQUIREMENTS

SEE DETAIL 17 FOR WALL PENETRATION

NO GALVANIZED STEEL PIPE ALLOWED BETWEEN MAIN LINE AND PRESSURE REDUCING VALVE.

10	12/31/15	TSC	REVISE PER SWDC
9	11/21/07	TSC	REVISE INTERIOR PIPING
8	11/6/00	RB	REVISE TUBING NOTE
7	7/10/00	RB	ADD NOTE 8
REV.	DATE	BY	DESCRIPTION



Bowen Collins & Associates, Inc.
CONSULTING ENGINEERS

SUMMIT WATER DISTRIBUTION CO.

3/4" TO 2" SERVICE CONNECTION

STD. DWG. NO.

7